



NEWSLETTER

September 2019

Message from the Deputy Headteacher

Dear Parents/Carers,

Welcome to the Autumn term of the 2019/20 school year. Even though the sunny weather is suggesting that Summer is desperately trying to cling on, there are definitely one or two welcome signs of Autumn around us.

We have been back to school for three weeks now and our new members of staff, Miss Brobbey (Y1), Mr Slack (Y1), Mrs Patterson (Y5) and Mrs Williams (TA in Y3) have settled well into life at Thames View.

Our 60 new Reception children are taking school in their stride, exploring their rich and exciting new environment and forging new friendships along the way.

During the Summer, Mrs Daburn headed a party of willing staff who helped to de-clutter, sort and re-organise both buildings, as well as beginning to reinstate and invigorate both library areas. With your continued support and Mrs Daburn at the helm, we, at Thames View, are looking forward to a very exciting and productive year.

Kind Regards

Wendy Riddington
Deputy Headteacher

Term Dates

Term 1 Ends for children on
Thursday 17th October

Staff Development Day
Friday 18th October

Term 2 starts on
Monday 28th October

Diary Dates

Friday 20.9.19	PTA Film Night – 6 pm (gates open) film from 7.30pm
Wednesday 25.9.19	Y6 Meet the teacher
Thursday 26.9.19	Parent Forum Meeting – 9.00 am (in KS1 Hall)
Tuesday 1.10.19	Year 4 trip to Lullingstone Villa
Thursday 3.10.19	Year R First Class Photos (Kent Messenger)
Tuesday 8.10.19	KS1 Harvest
Wednesday 9.10.19	KS2 Harvest
Friday 11.10.19	PTA Disco
Tuesday 15.10.19	Parent Consultation Meetings
Thursday 17.10.19	Parent Consultation Meetings

SCHOOL NEWS

Spelling Shed

We would like to thank all of the children and parents for embracing our spelling programme 'Spelling Shed.' We are still in our

first year but already children have shown real engagement and enjoyment with the different spelling activities. The game can be played online for free using the children's log in details. All children have new log ins and should have already received them or be receiving them soon. If there are any problems with your child's log in please see their teacher straight away.

After only a week of being back in school I can proudly say that we are already placing ourselves highly amongst the world league. On Monday of last week, Pioneer were ranked 64th in the world league. Go Thames View!!! I know other classes have made it their target to topple the Year 6 class so watch this space.

Keep spelling!

The children in Nursery, Years R, 1 and 2 enjoy a fruit or vegetable snack during morning break provided through a Government funded scheme.

From Monday to Friday, on both Junior playgrounds, a selection of fruit and vegetables are available at 10p per portion. Choices might include peppers, raisins, cucumber, apple, melon, etc.



Small change would be appreciated, if possible.

BINGO Club !

A little plea from Mrs Marsh - next time you're having a clear out at home, could you please look out for any small toys/gifts that would make bingo club prizes.

Thank You

Attendance

Regular school attendance and punctuality is one of the most powerful ways you can prepare your child for success - both in school and in life. Every learning moment counts and is vital for your child's educational and social development.

Days off school add up to lost learning

175 NON SCHOOL DAYS A YEAR

175 days to spend on family time, visits, holidays, shopping, household jobs and other appointments



At Thames View Primary School we are taking the following positive steps to ensure an improvement in our overall attendance figures. **Our overall target for this year is 97%**

- Presenting individual 100% attendance certificates at Celebration Assemblies at the end of Terms 2, 4 and 6.
- Presentation of 'Attendance Ted' to the Key Stage 1 class with the highest level of punctuality and attendance each week, in the Friday Celebration Assembly;
- Awarding a 'Freedom Friday', to any class with a weekly punctuality and attendance figure of 97% and above with no recorded late arrivals, which means the whole class can wear their own clothes to school on the following Friday.
- Sharing attendance and punctuality data, hints and tips along with news of the classes with the best attendance on the board outside the main office.
- A new Pastoral Support Link Worker offering attendance clinics to parents/carers who experience difficulties in getting their child(ren) to school regularly and on time.
- Actively using 'Pupil Voice' to seek ideas and feedback from pupils on attendance and punctuality systems and rewards.

We appreciate your ongoing support with this aspect of Thames View Primary School improvement, however, if your child is genuinely unwell, please remember to follow the guidance set out below

Pupil Absence Due To Sickness

If your child is absent from school it is very important that you contact the school office as soon as possible on the first day of non-attendance to give the reason for their absence. It is important that if your child is suffering from sickness and/or diarrhoea they **should not** return to school until **48 hours after** the symptoms cease. This will stop the risk of infection to other children and staff. Thank you.

Health and Safety Reminders

- ◆ Please be reminded that Thames View Primary School is still a **'Nut-Free' Zone**. Please would you be vigilant about the ingredients in the food in your child's lunch boxes, the food that you are eating on the site and any food that you send in to school. Please be mindful that some chocolate spreads also contain nuts.



Thank You

- ◆ Just a little reminder that children **should not** use the play equipment on either playground before school begins and if children come to school on bikes or scooters, they should not ride them around the playground when they arrive, as there are often very little children on the playground.
Incidentally, a school in Maidstone has, very kindly, donated a bike and scooter rack, which will be installed in the KS1/EYFS playground as soon as possible.
- ◆ Please be extremely careful when crossing the drive way outside the school gates
BEWARE OF MOVING VEHICLES

KS2 (Years 4, 5, 6) Music Lessons at Thames View Primary

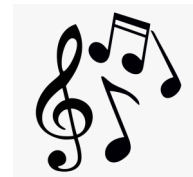
Through Music for Schools, children are offered a range of instrumental lessons at Thames View and there are a limited number of spaces available. If you would like your child to begin learning an instrument, please register your interest at the Main Reception or via the office e-mail. You will then be contacted if you have been allocated a place. If you are not immediately offered a place, your child will be placed on a waiting list. We are also willing to expand the music offer, should there be demand, so do ask if you have any questions.

Lessons currently available.

Guitar: Year 4, 5, 6

Flute: Year 4, 5

Double Bass: Year 5 and 6



ADMISSION TO SECONDARY SCHOOL SEPTEMBER 2020

Year 6 pupils

Details of how to apply for a place for your child to start secondary school in September 2020 can be found following the link below:

<http://www.medway.gov.uk/schoolsandeducation/applyforaschoolplace/applyforasecondaryplace.aspx>

Secondary school and UTC applications close on Wednesday 31st October 2019